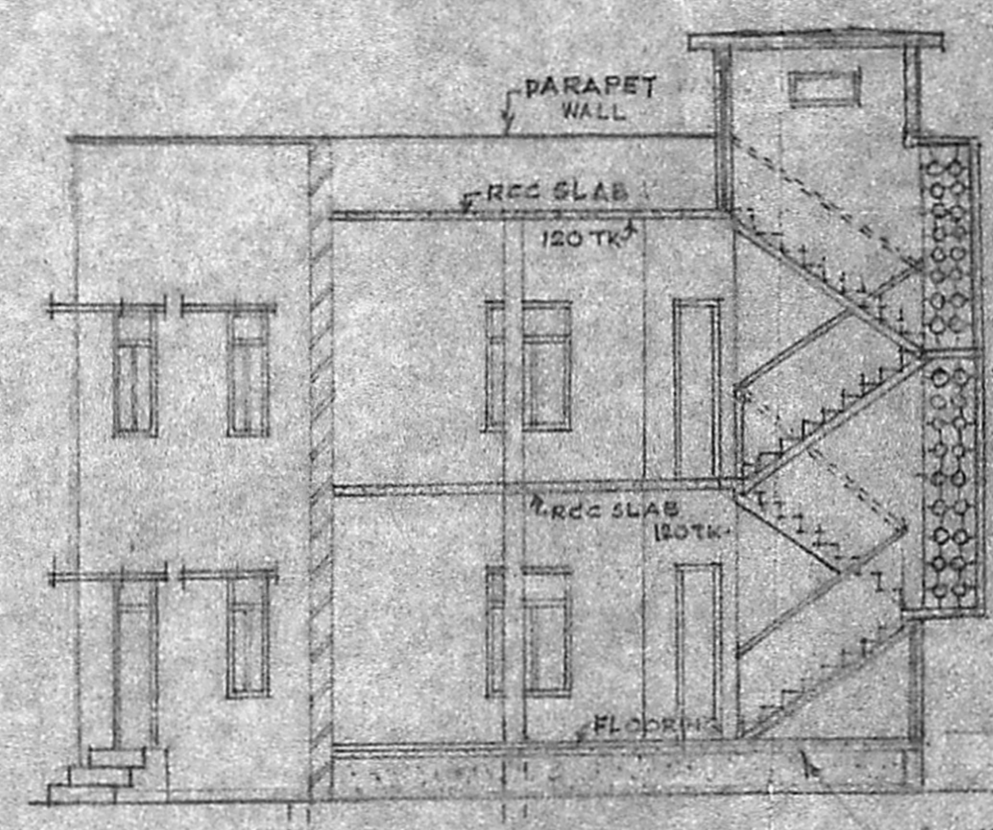
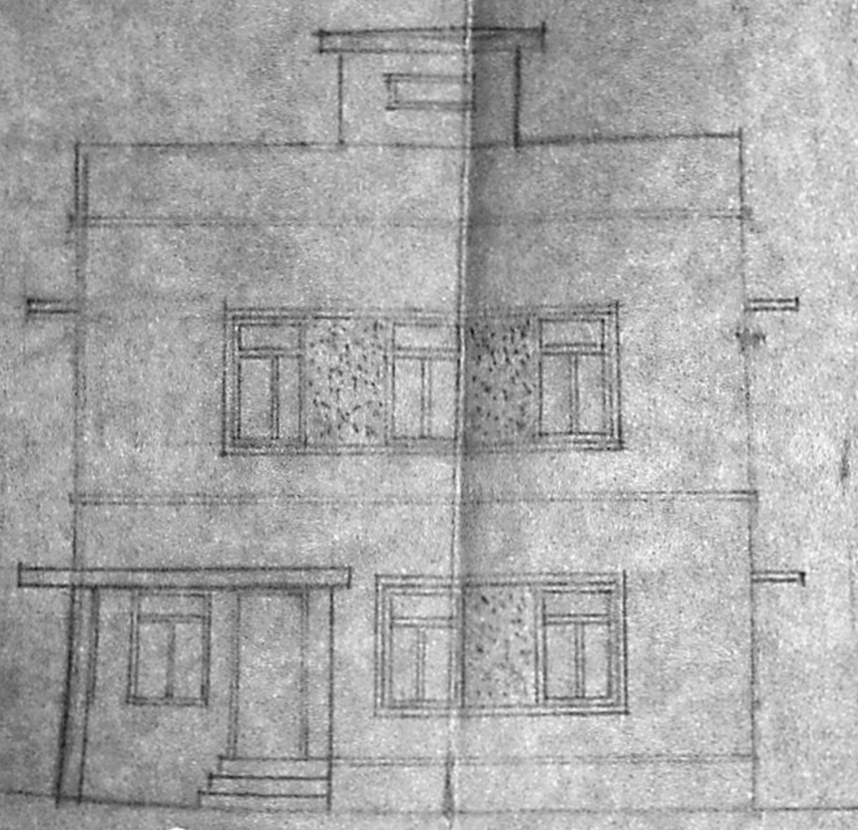
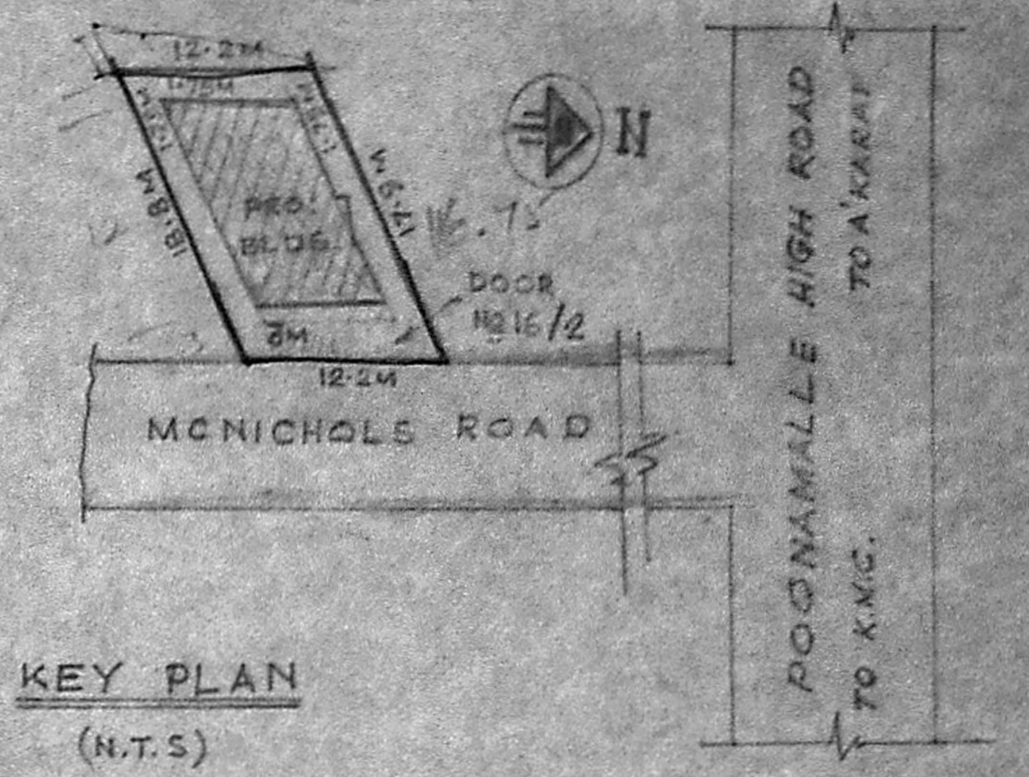


MMDA 'C' / PP. 1, 2
 C.No. CH 2823/Sr
 Aest.
 Scrutiny: 2/11/57
PART I
PART II
 Hg 12/12
 A.P.



Planning Permit No. C.P.P. 25/93
APPROVED
 SUBJECT TO THE CONDITIONS IN THIS OFFICE LETTER
 No. CH 2823/Sr Date: 2/11/57
 FOR MEMBER SECRETARY
 MADRAS METROPOLITAN
 DEVELOPMENT AUTHORITY
 MADRAS - 600 008.

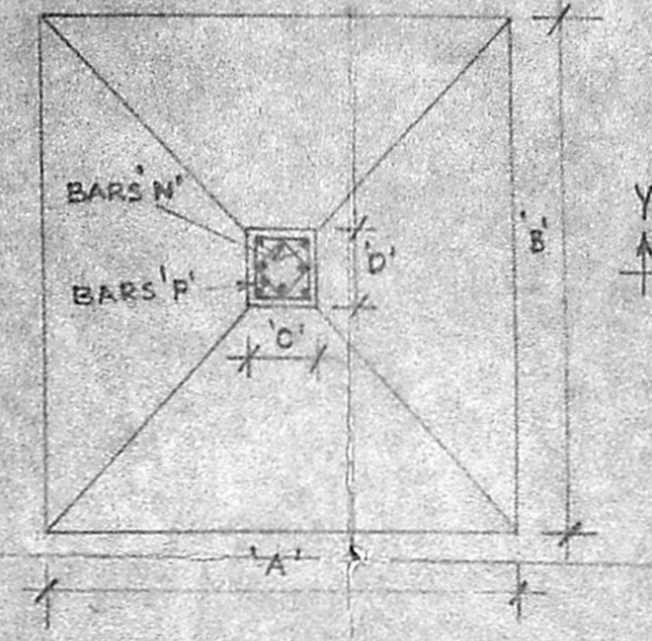
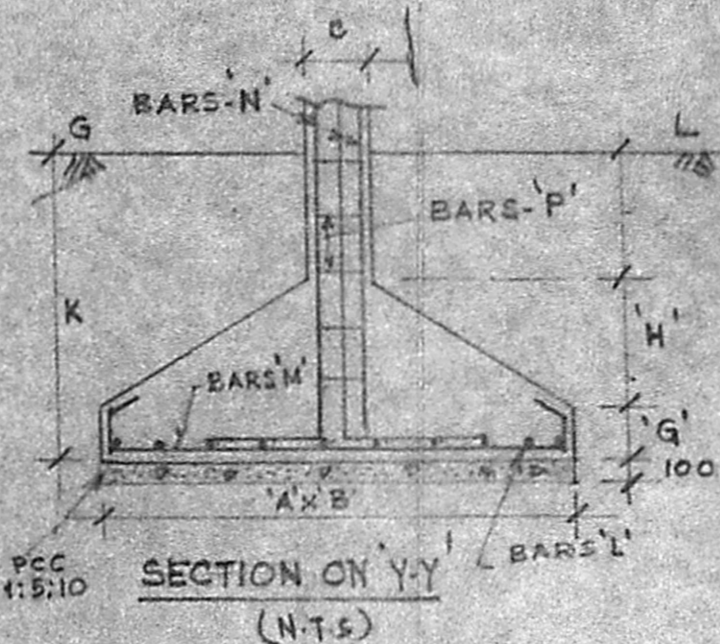


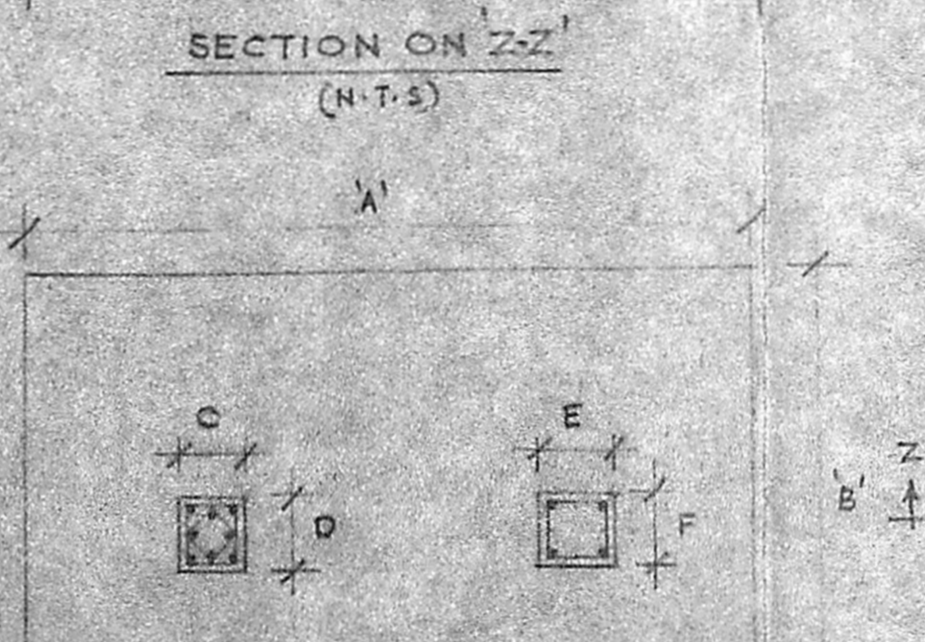
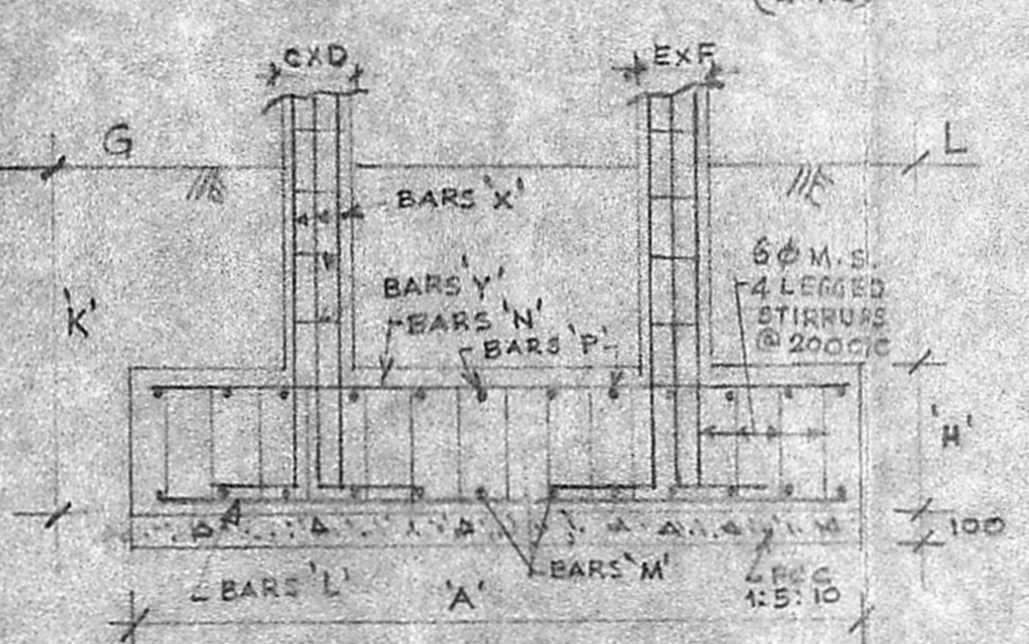
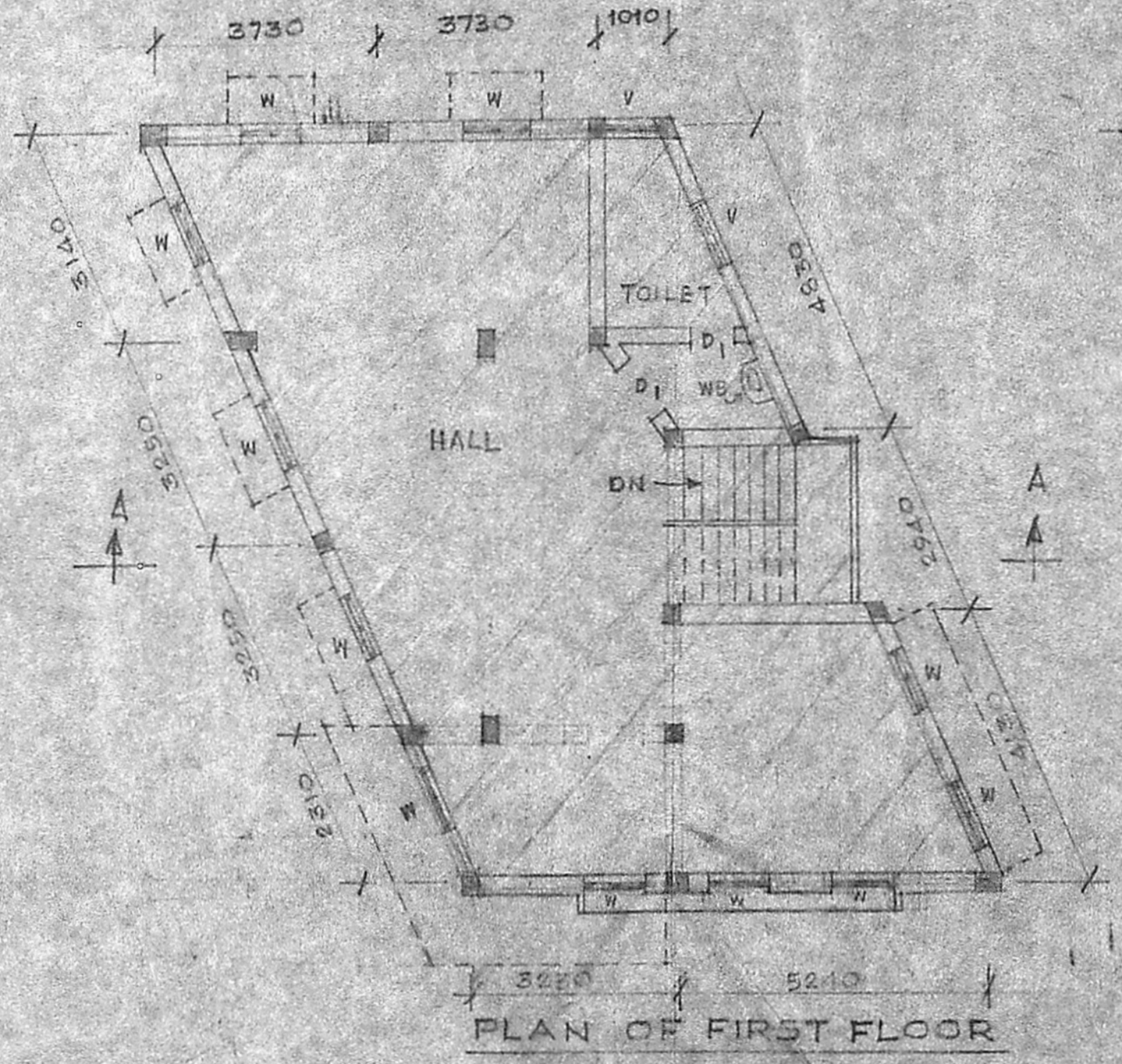
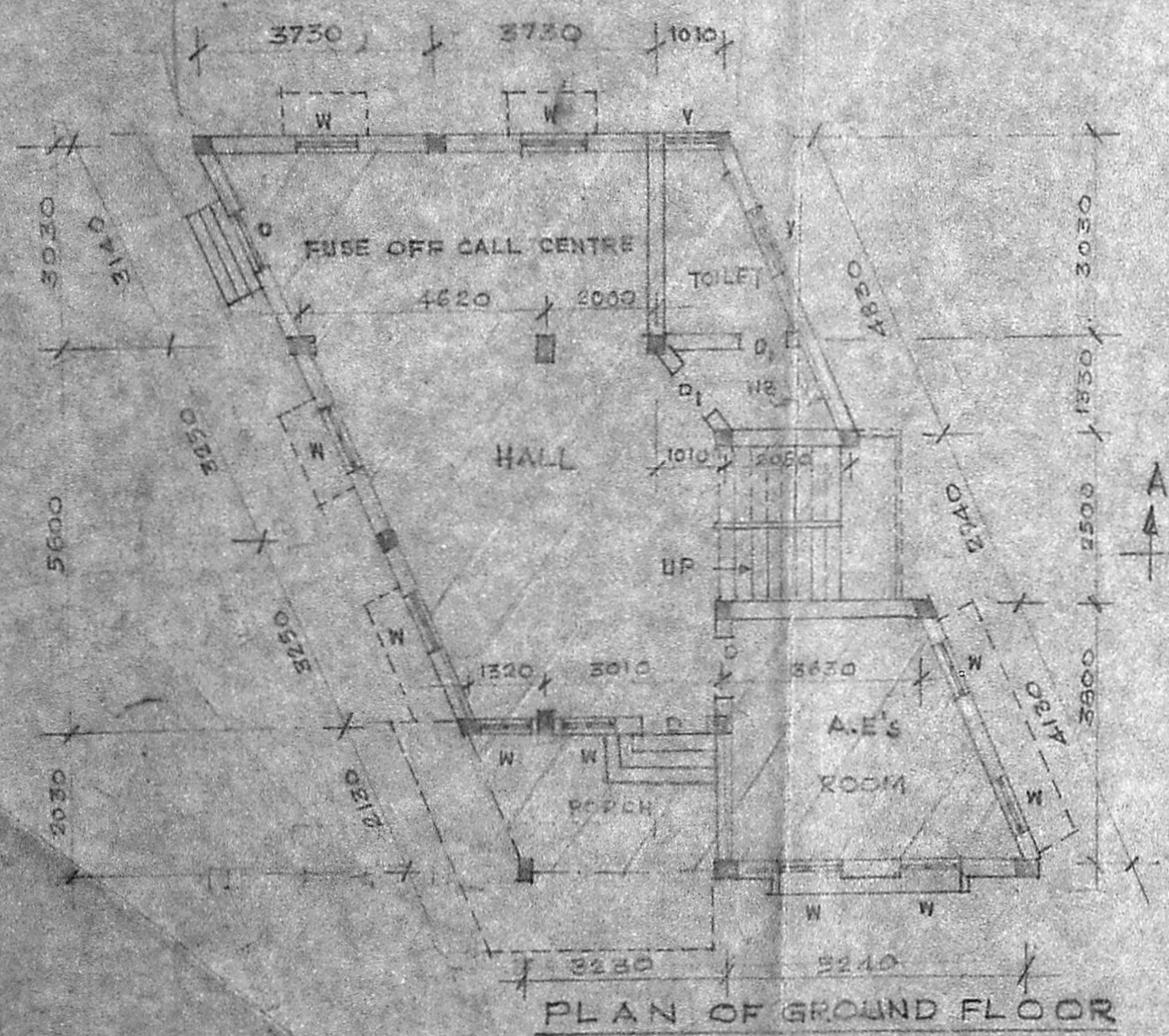
TABLE SHOWING THE DETAILS OF COLUMNS & ISOLATED FOOTINGS

COLUMN	FOOTING DIMENSION A & B	COLUMN DIMENSION C & D	DEPTH OF FOOTING			REINFORCEMENT DETAILS				ADAPTED COLUMN
			G	H	K	FOOTINGS		COLUMNS		
C1	1900x1900	230x230	200	450	1300	12 Nos. 12φ RTs	12 Nos. 12φ RTs	8 Nos. 12φ RTs	6 φ M.S. @ 150 c/c	C2
C5	2100x2100	300x230	200	500	1350	19 Nos. 12φ RTs	19 Nos. 12φ RTs	8 Nos. 16φ RTs	6 φ M.S. @ 200 c/c	
C6	1900x1900	230x300	200	500	1300	16 Nos. 12φ RTs	16 Nos. 12φ RTs	8 Nos. 16φ RTs	6 φ M.S. @ 200 c/c	
C9	2100x2100	230x230	200	500	1300	19 Nos. 12φ RTs	19 Nos. 12φ RTs	8 Nos. 16φ RTs	6 φ M.S. @ 200 c/c	
C10	1700x1700	230x230	200	400	1200	12 Nos. 12φ RTs	12 Nos. 12φ RTs	8 Nos. 12φ RTs	6 φ M.S. @ 150 c/c	
C12	2100x2100	230x230	200	500	1300	19 Nos. 12φ RTs	19 Nos. 12φ RTs	8 Nos. 16φ RTs	6 φ M.S. @ 200 c/c	
C16	1700x1700	230x230	200	400	1200	12 Nos. 12φ RTs	12 Nos. 12φ RTs	8 Nos. 12φ RTs	6 φ M.S. @ 150 c/c	
C17	2100x2100	300x230	200	500	1350	19 Nos. 12φ RTs	19 Nos. 12φ RTs	8 Nos. 16φ RTs	6 φ M.S. @ 200 c/c	C16

ONE LAYER OF 150MM THK. 1:1 MIX. OF LIME & RIVER SAND TO BE PROVIDED OVER THE RIVER SAND FILLING.

TABLE SHOWING THE DETAILS OF COLUMNS & COMBINED FOOTINGS.

COLUMN	FOOTING DIMENSION A X E	COLUMN DIMENSION C X D	EXF	DEPTH OF FOOTING		REINFORCEMENT DETAILS							
				H	K	FOOTINGS				COLUMNS			
				BARS-L	BARS-M	BARS-N	BARS-P	MAIN RODS	LATERAL TIES	MAIN RODS	LATERAL TIES		
C1	3000x1900	250x230	230x230	450	1500	10 Nos. OF 12φ RTs	16 Nos. OF 12φ RTs	10 Nos. OF 12φ RTs	16φ RTs @ 200 c/c	8 Nos. OF 12φ RTs	6 φ M.S. @ 150 c/c	8 Nos. OF 12φ RTs	6 φ M.S. @ 150 c/c
C11	3200x1800	250x230	230x230	540	1500	11 Nos. OF 12φ RTs	20 Nos. OF 12φ RTs	15 Nos. OF 12φ RTs	10φ RTs @ 200 c/c	8 Nos. OF 12φ RTs	6 φ M.S. @ 150 c/c	8 Nos. OF 12φ RTs	6 φ M.S. @ 150 c/c
C13	3200x2000	230x250	230x300	450	1500	10 Nos. OF 12φ RTs	18 Nos. OF 12φ RTs	10 Nos. OF 12φ RTs	10φ RTs @ 200 c/c	8 Nos. OF 12φ RTs	6 φ M.S. @ 150 c/c	8 Nos. OF 12φ RTs	6 φ M.S. @ 150 c/c



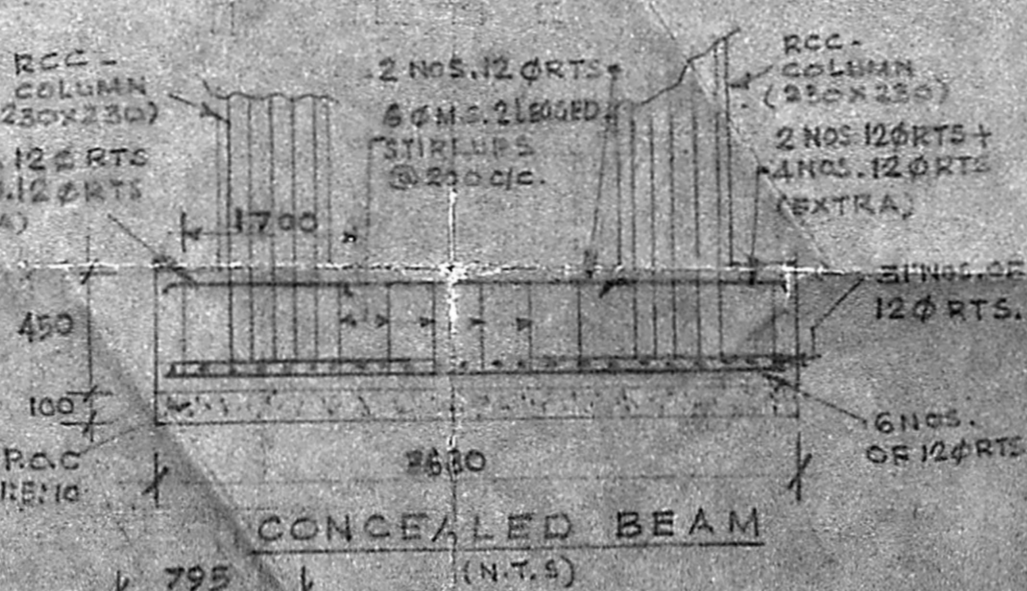
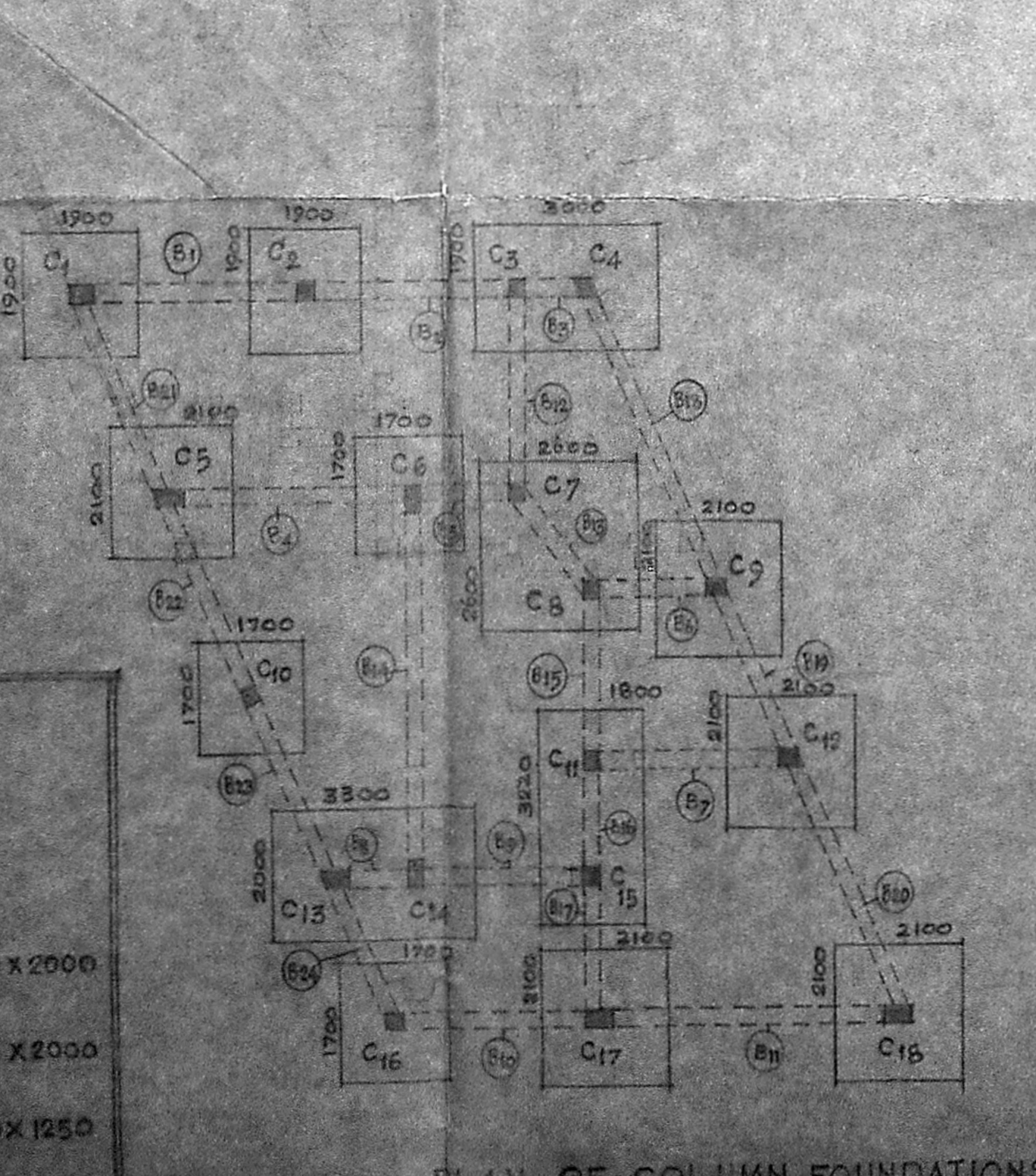
SPECIFICATIONS:

- FOUNDATION: FOUNDATION HAS BEEN DESIGNED ASSUMING S.B.C. OF SOIL AS 10 T/M² AT A DEPTH OF 15M BELOW G.L. AS PER F.S. ENGINEER'S REPORT. A GRADE BEAM TO BE PROVIDED AT G.L. CONNECTING ALL COLUMNS. AIR GAP OF 20MM BELOW THE BEAM MAY BE PROVIDED AS PER I.S. 2911 PART III 1950.
- BASEMENT & SUPERSTRUCTURE: BRICK WORK IN C.M. 1:3. WALLS, BRICKS R.C.C. (1:4); COLUMNS R.C.C. (1:1.5:3).
- PLASTERING: INTERIOR FACES OF WALLS WITH C.M. 1:1.5, 12MM THICK; EXTERIOR FACES OF WALLS WITH C.M. 1:3, 12MM THICK AND CEILING WITH C.M. 1:3, 12MM THICK.
- FLOORING: GRANOLITHIC FLOORING 40MM THICK OVER P.C.C. 1:4:8-100MM THICK IN GROUND FLOOR, AND C.M. 1:3, 20MM THK OVER FLOOR SLAB IN FIRST FLOOR, TO BE DONE INTERNALLY.
- WEATHERING COURSE: WEATHERING COURSE OVER ROOF SLAB WITH BRICK JELLY 20MM SIZE AND ONE COURSE OF PRESSED TILES 150x150x20, IN C.M. 1:3, MIXED WITH CRUDE OIL.
- STAIR CASE: WAIST SLAB R.C.C. 1:1.5, 110MM THICK, RISE 172MM, TREADS 250MM, HAND RAILS BRICK ON EDGE IN C.M. 1:4, PLASTERED WITH C.M. 1:4.
- WATER TANK: WATER TANK OF SIZE 1.25MX1.44MX1.00M, MAY BE PROVIDED OVER WASHING PORTION (IN TOILET).
- GENERAL: i) REINFORCEMENT DETAILS WILL BE FURNISHED SEPARATELY. ii) SALIENT FEATURES OF BUILDING SUCH AS YEAR OF CONSTRUCTION, NO. OF FLOORS FOR WHICH DESIGNED, LOAD ASSUMED FOR FOUNDATION ETC. TO BE PAINTED IN A PROMINENT PLACE INSIDE THE BUILDING. iii) TOILET SLAB IN FIRST FLOOR TO BE DEPRESSED AND FINISHED 50MM BELOW GENERAL FLOOR LEVEL. iv) WALLS, INTERIOR & CEILING TO BE WHITE. WASHED & COATS OVER A PRIMING COAT WALLS OUTSIDE WITH 2 COATS OF CEMENT PAINT OVER ONE COAT OF WHITE CEMENT.

CHIEF ENGINEER (CIVIL DESIGNS)

SCHEDULE OF DOORS, WINDOWS & VENTILATORS.

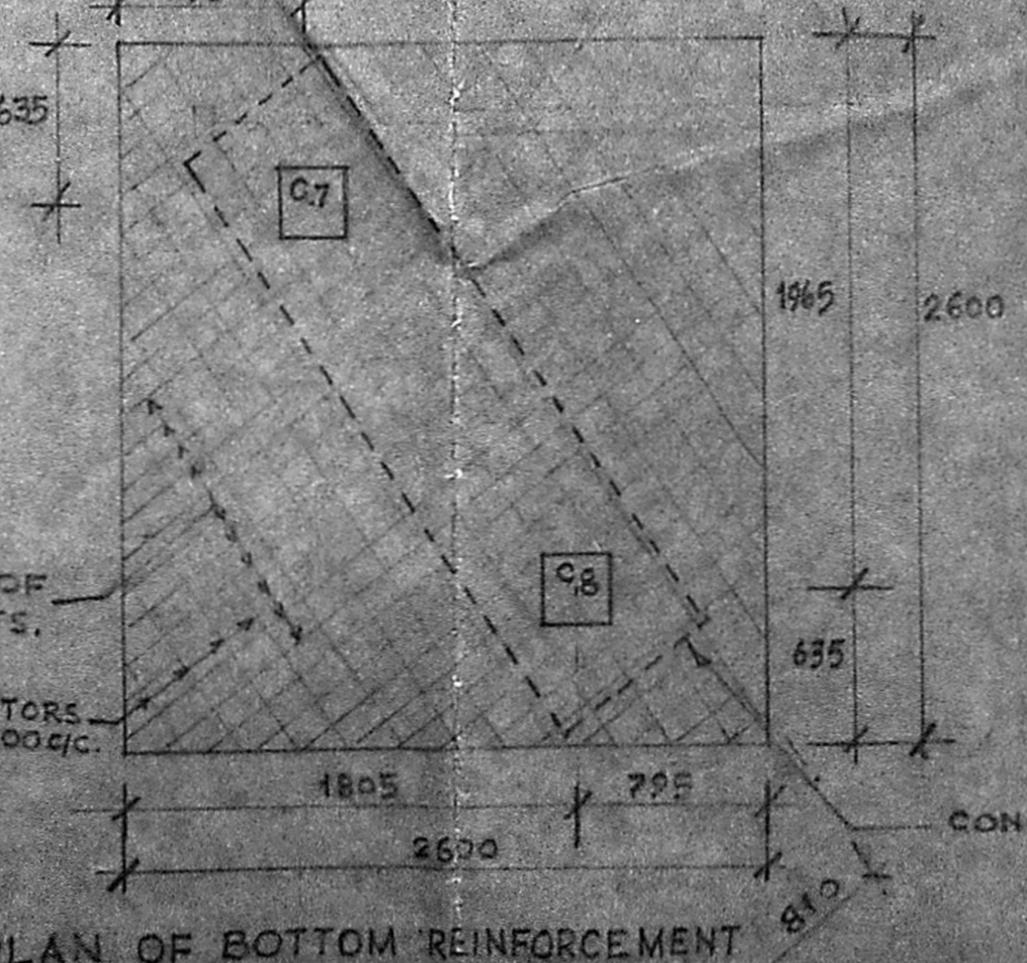
C.W. DOOR FRAME WITH FLUSH DOOR (DOUBLE LEAF)	D 1190 x 2000
C.W. DOOR FRAME WITH FLUSH DOOR (SINGLE LEAF)	D1 990 x 2000
C.W. WINDOWS WITH GLAZED SHUTTERS	W 1050 x 1250
C.W. VENTILATORS	V 900 x 600



ALL DIMENSIONS GIVEN ARE IN MILLIMETERS

DETAILS OF FLOOR & ROOF BEAMS

BEAMS	SIZE
B6, B13	230 x 230
B5, B9, B10, B15, B16, B17, B19, B21, B22, B23, B24	230 x 300
B1, B2	330 x 350
B4, B5, B7, B11, B20	230 x 400
B14	230 x 450
B3, B12, B18	230 x 550



Executive Engineer (Civil)
 M.D.C. T.N.E.B.
 LICENSED SURVEYOR
 CLASS I No. 37
 ELECTRICITY AVENUE, ANNA SALAI,
 MADRAS-600 002.

REVISION: 1 DT 23.09.58
 CHANGES IN SIZE OF BEAMS
 B3, B5, B11, B12, B18.
 A.E.S. EE4 CEJED
 E.E. RACED

TAMIL NADU
 ELECTRICITY BOARD
 OFFICE BLDG AT McNICHOLS RD
 GENERAL ARRANGEMENT
 AND FOUNDATION DETAILS
 DRG. NO. CD 51/5
 SHEET 1/2
 DATE: 4-02-58
 SCALE: 1:100